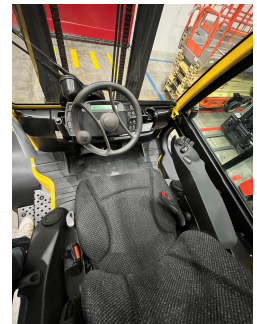


## Hyster H7.0FT - UCM10392

Year	2019
Hours worked	1800
Setup	BIG READY
Brakes type	DRUM BRAKES
Directional control type	SWITCH
Driver's cab	CAB
Engine type	DIESEL
Equipment	SIDESHIFT
Forks	YES
Forks length in mm	1920
Front axle	TWIN
Greasing	No automatic
Hydraulic control types	MINILEVERS
Hydraulic functions number	3
License plate	NO
Lift height in mm	3800
Load centre in mm	600
Mast Overall in mm	2850
Mast type	PFL
Overhead guard type	STANDARD OVERHEAD GUARD
Tire type	SOLID TIRES
Transmission type	POWERSHIFT
Version	STANDARD
Weight capacity in kg	7000



[Product sheet link](#)

### Used as if it had never been used.

 Via Calabria 22  
20054 Segrate (MI)

 02925051

 [info@cls.it](mailto:info@cls.it)

 Team CLS

**cls**  
A TESVA COMPANY

Check the setup at the link:

<https://myusato.cls.it/allestimenti-e-garanzia>

**Used as if it had never been used.**



MyUsato® CLS: the safe and convenient choice for a fleet capable of any business. Convenience, quality, safety and reliability: these are the main characteristics of the MyUsato offer, the service proposed by CLS to meet the needs of companies that need to renew their fleet of machines with modern and reliable solutions.

The MyUsato® service offers multi-brand handling machines with an excellent quality-price ratio: the aim is to satisfy the needs of customers ensuring quality, safety and cost optimization.