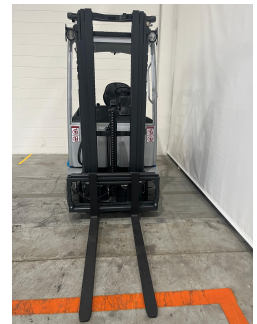


Still RX20-15 - UCE20143

Year	2011
Hours worked	5959
Setup	EASY
Battery amperage in A	625
Battery voltage in V	48
Brakes type	WET BRAKES
Equipment	SIDESHIFT
Forks length in mm	1200
Front axle	STANDARD
Hydraulic control types	MECHANICAL LEVERS
Hydraulic functions number	3
License plate	NO
Lift height in mm	4620
Load centre in mm	500
Mast Overall in mm	2060
Mast type	FFT
Tire type	SOLID TIRES
Type	STANDARD
Version	STANDARD
Weight capacity in kg	1500



[Product sheet link](#)

Check the setup at the link:

<https://myusato.cls.it/allestimenti-e-garanzia>

Used as if it had never been used.