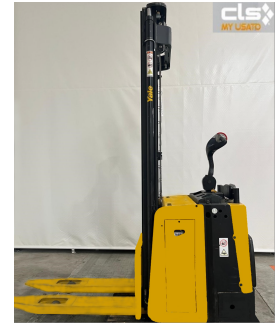


Yale MS12X - UCE20255

Year	2017
Hours worked	2639
Setup	PREMIUM
Attachement type	NO ATTACHEMENT
Battery brand	TAB
Battery voltage in V	24
Drive roller type	VULKOLLAN
Driving type	RIDE-ON
Ext- ext forks width in mm	560
Forks	YES
Forks length in mm	1200
Lift height in mm	4168
Load centre in mm	500
Load rollers type	SINGLE WHEEL:TANDEM WHEELSOB
Mast Overall in mm	2570
Mast type	PFL
Overhead guard type	STANDARD OVERHEAD GUARD
Steering control	TILLER
Tire type	VULKOLLAN
Type	STANDARD
Version	STANDARD
Weight capacity in kg	1200



[Product sheet link](#)

Check the setup at the link:

<https://myusato.cls.it/allestimenti-e-garanzia>

Used as if it had never been used.



MyUsato® CLS: the safe and convenient choice for a fleet capable of any business. Convenience, quality, safety and reliability: these are the main characteristics of the MyUsato offer, the service proposed by CLS to meet the needs of companies that need to renew their fleet of machines with modern and reliable solutions.

The MyUsato® service offers multi-brand handling machines with an excellent quality-price ratio: the aim is to satisfy the needs of customers ensuring quality, safety and cost optimization.