

Via Calabria 22
20054 Segrate (MI)

info@cls.it

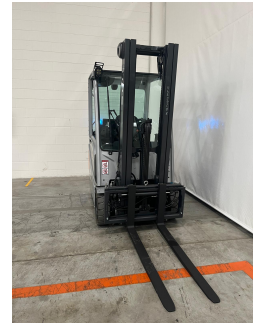
02925051

Team CLS

cls
A TESVA COMPANY

Still RX20-16 - UCE20288

Year	2019
Hours worked	8092
Setup	EASY
Attachement type	NO ATTACHEMENT
Battery amperage in A	625
Battery brand	OTHER BRAND
Battery voltage in V	48
Brakes type	WET BRAKES
Directional control type	LEVER
Driver's cab	3 CAB PANELS
Equipment	SIDESHIFT
Forks	YES
Forks length in mm	1200
Front axle	STANDARD
Hydraulic control types	MINILEVERS
Hydraulic functions number	4
License plate	NO
Lift height in mm	4920
Load centre in mm	500
Mast Overall in mm	2150
Mast type	FFT
Overhead guard type	STANDARD OVERHEAD GUARD
Tire type	SOLID TIRES
Type	STANDARD



[Product sheet link](#)

Used as if it had never been used.

cls
A TESVA COMPANY

MyUsato® CLS: the safe and convenient choice for a fleet capable of any business. Convenience, quality, safety and reliability: these are the main characteristics of the MyUsato offer, the service proposed by CLS to meet the needs of companies that need to renew their fleet of machines with modern and reliable solutions.

The MyUsato® service offers multi-brand handling machines with an excellent quality-price ratio: the aim is to satisfy the needs of customers ensuring quality, safety and cost optimization.

 Via Calabria 22
20054 Segrate (MI)

 02925051

 info@cls.it

 Team CLS

cls
A TESVA COMPANY

Version STANDARD

Weight capacity in kg 1600

Check the setup at the link:

<https://myusato.cls.it/allestimenti-e-garanzia>

Used as if it had never been used.



MyUsato® CLS: the safe and convenient choice for a fleet capable of any business. Convenience, quality, safety and reliability: these are the main characteristics of the MyUsato offer, the service proposed by CLS to meet the needs of companies that need to renew their fleet of machines with modern and reliable solutions.

The MyUsato® service offers multi-brand handling machines with an excellent quality-price ratio: the aim is to satisfy the needs of customers ensuring quality, safety and cost optimization.