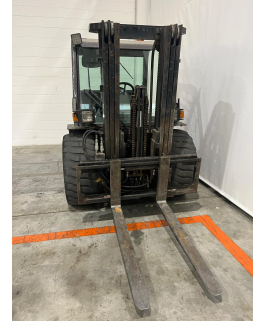


MANITOU MH25 – UCM10562


Year	2014
Hours worked	2658
Setup	PREMIUM
Attachement type	NO ATTACHEMENT
Brakes type	DRUM BRAKES
Brand	Altri Carrelli
Directional control type	SWITCH
Driver's cab	3 CAB PANELS
Engine model	Perkins Turbo: 60 cv – 44,7 kw
Engine type	DIESEL
Equipment	SIDESHIFT
Forks	YES
Forks length in mm	1200
Front axle	STANDARD
Greasing	No automatic
Hydraulic control types	MECHANICAL LEVERS
Hydraulic functions number	3
License plate	NO
Lift height in mm	3700
Load centre in mm	500
Mast Overall in mm	2045
Mast type	FFT
Model	MANITOU MH25
Overhead guard type	STANDARD OVERHEAD GUARD



[Product sheet link](#)

Used as if it had never been used.

 Via Calabria 22
20054 Segrate (MI)

 02925051

 info@cls.it

 Team CLS


A TESVA COMPANY

Tire type	PNEUMATIC TIRES
Transmission type	HYDROSTATIC
Version	STANDARD
Weight capacity in kg	2500

Check the setup at the link:

<https://myusato.cls.it/allestimenti-e-garanzia>

Used as if it had never been used.



MyUsato® CLS: the safe and convenient choice for a fleet capable of any business. Convenience, quality, safety and reliability: these are the main characteristics of the MyUsato offer, the service proposed by CLS to meet the needs of companies that need to renew their fleet of machines with modern and reliable solutions.

The MyUsato® service offers multi-brand handling machines with an excellent quality-price ratio: the aim is to satisfy the needs of customers ensuring quality, safety and cost optimization.