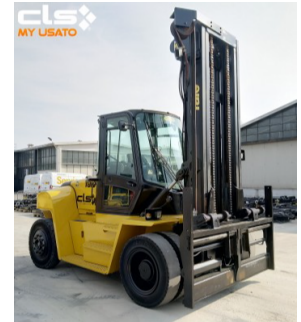


Yale GDP160 - UCM10579

Year	2015
Hours worked	7000
Setup	BIG READY
Attachement type	FORKS POSITIONER
Battery voltage in V	48
Brakes type	WET BRAKES
Directional control type	LEVER
Driver's cab	CAB
Engine model	DIESEL
Equipment	SIDESHIFT
Forks	YES
Forks length in mm	1800
Front axle	TWIN
Greasing	No automatic
Hydraulic control types	MINILEVERS
Hydraulic functions number	4
License plate	NO
Lift height in mm	4650
Load centre in mm	600
Mast Overall in mm	4000
Mast type	PFL
Overhead guard type	STANDARD OVERHEAD GUARD
Reference standard	STAGE V
Tire type	SOLID TIRES



[Product sheet link](#)

Used as if it had never been used.

 Via Calabria 22
20054 Segrate (MI)

 02925051

 info@cls.it

 Team CLS


A TESVA COMPANY

Transmission model	X
Transmission type	POWERSHIFT
Version	STANDARD
Weight capacity in kg	16000

Check the setup at the link:

<https://myusato.cls.it/allestimenti-e-garanzia>

Used as if it had never been used.



MyUsato® CLS: the safe and convenient choice for a fleet capable of any business. Convenience, quality, safety and reliability: these are the main characteristics of the MyUsato offer, the service proposed by CLS to meet the needs of companies that need to renew their fleet of machines with modern and reliable solutions.

The MyUsato® service offers multi-brand handling machines with an excellent quality-price ratio: the aim is to satisfy the needs of customers ensuring quality, safety and cost optimization.