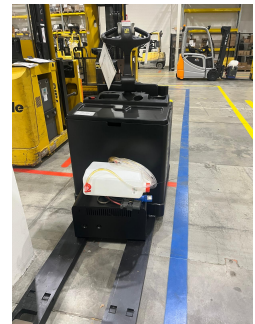
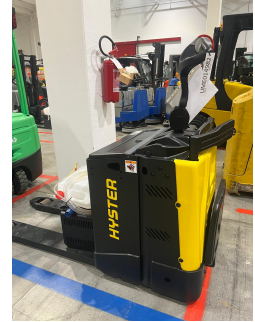


Hyster P2.0S FBW - UME014982

Year	2019
Hours worked	5380
Setup	PREMIUM
Attachement type	NO ATTACHEMENT
Battery amperage in A	400
Battery brand	MIDAC
Battery voltage in V	24
Drive roller type	VULKOLLAN
Driving type	RIDE-ON
Ext- ext forks width in mm	650
Forks	YES
Forks length in mm	1200
Lift height in mm	0
Load centre in mm	500
Load rollers type	SINGLE WHEEL:TANDEM WHEELS
Mast Overall in mm	1200
Steering control	TILLER
Tire type	VULKOLLAN
Type	STANDARD
Version	STANDARD
Weight capacity in kg	2000



[Product sheet link](#)

Check the setup at the link:

<https://myusato.cls.it/allestimenti-e-garanzia>

Used as if it had never been used.