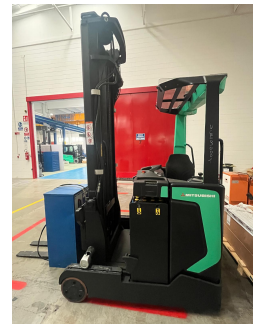


## Mitsubishi RB16N2S - UCE90001

Year	2015
Hours worked	6341
Setup	PREMIUM
Attachement type	NO ATTACHEMENT
Battery amperage in A	620
Battery brand	FIAMM
Battery voltage in V	48
Directional control type	SWITCH
Driver's cab	WITHOUT CAB
Equipment	SIDESHIFT
Forks	YES
Forks length in mm	1200
Hydraulic control types	MINILEVERS
Hydraulic functions number	4
License plate	NO
Lift height in mm	7000
Load centre in mm	500
Mast Overall in mm	3200
Mast type	FFT
Overhead guard type	STANDARD OVERHEAD GUARD
Tire type	VULKOLLAN
Type	THIN PLATE PURE LEAD
Version	STANDARD
Weight capacity in kg	1600



[Product sheet link](#)

**Used as if it had never been used.**

 Via Calabria 22  
20054 Segrate (MI)

 02925051

 [info@cls.it](mailto:info@cls.it)

 Team CLS



Check the setup at the link:

<https://myusato.cls.it/allestimenti-e-garanzia>

#### Used as if it had never been used.



MyUsato® CLS: the safe and convenient choice for a fleet capable of any business. Convenience, quality, safety and reliability: these are the main characteristics of the MyUsato offer, the service proposed by CLS to meet the needs of companies that need to renew their fleet of machines with modern and reliable solutions.

The MyUsato® service offers multi-brand handling machines with an excellent quality-price ratio: the aim is to satisfy the needs of customers ensuring quality, safety and cost optimization.