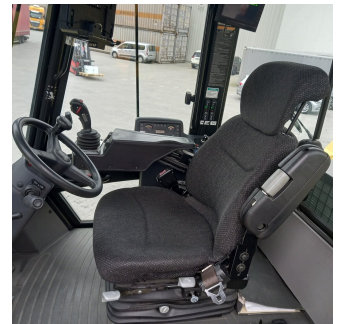


Hyster RS45-31CH - UCM10209

Year	2016
Hours worked	4250
Setup	BIG READY
1st row stacking level	N° 5 WITH 8'6" CONTAINER
Attachement type	SPREADER
Cab	Partial sliding
Directional control type	LEVER
Driver's cab	CAB
Engine model	QSL 9 TIER IV
Greasing	Automatic
Hydraulic control types	JOYSTICK
Load centre in mm	1200
Reference standard	STAGE V
Stacking height 1st row in mm	15260
Tire type	PNEUMATIC TIRES
Transmission model	DANA TE32
Version	WITHOUT STABILIZERS
Weight capacity in kg	45000



[Product sheet link](#)

Check the setup at the link:

<https://myusato.cls.it/allestimenti-e-garanzia>

Used as if it had never been used.



MyUsato® CLS: the safe and convenient choice for a fleet capable of any business. Convenience, quality, safety and reliability: these are the main characteristics of the MyUsato offer, the service proposed by CLS to meet the needs of companies that need to renew their fleet of machines with modern and reliable solutions.

The MyUsato® service offers multi-brand handling machines with an excellent quality-price ratio: the aim is to satisfy the needs of customers ensuring quality, safety and cost optimization.