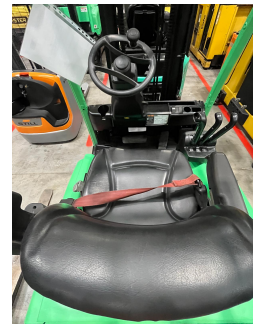


## Yale ERP16VT – UCE19158

Year	2016
Hours worked	4475
Setup	PREMIUM PLUS
Attachement type	NO ATTACHEMENT
Battery voltage in V	48
Brakes type	WET BRAKES
Directional control type	SWITCH
Driver's cab	WITHOUT CAB
Equipment	SIDESHIFT
Forks	YES
Forks length in mm	1000
Hydraulic control types	MECHANICAL LEVERS
Hydraulic functions number	3
Lift height in mm	4430
Load centre in mm	500
Mast type	PFL
Overhead guard type	STANDARD OVERHEAD GUARD
Tire type	SOLID TIRES
Version	STANDARD
Weight capacity in kg	1600



[Product sheet link](#)

Check the setup at the link:

<https://myusato.cls.it/allestimenti-e-garanzia>

### Used as if it had never been used.