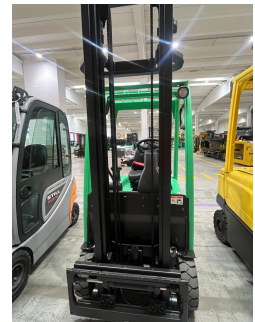
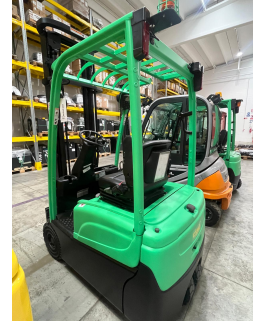


Yale ERP16VT – UCE19238

Year	2014
Hours worked	6878
Setup	PREMIUM PLUS
Attachement type	NO ATTACHEMENT
Battery voltage in V	48
Brakes type	WET BRAKES
Directional control type	SWITCH
Driver's cab	WITHOUT CAB
Equipment	SIDESHIFT
Forks	YES
Forks length in mm	1100
Front axle	STANDARD
Hydraulic control types	MECHANICAL LEVERS
Hydraulic functions number	3
Lift height in mm	3820
Load centre in mm	500
Mast type	FFL
Overhead guard type	STANDARD OVERHEAD GUARD
Tire type	SOLID TIRES
Version	STANDARD
Weight capacity in kg	1600



[Product sheet link](#)

Check the setup at the link:

<https://myusato.cls.it/allestimenti-e-garanzia>

Used as if it had never been used.